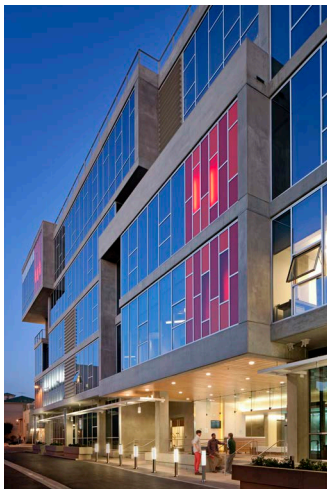


The Lot Formosa South
Los Angeles, California



This five-story building is the first phase of The Lot Movie Studios Comprehensive Development Plan.

Taking the place of two smaller buildings, the design creates a distinctive creative office environment that will appeal to entertainment production and media/creative companies alike. With a straightforward rectangular volume, the envelope creates offsets, corner offices, and a series of ledges and terraces that bring vitality, scale, and

distinctiveness to tenants. The contemporary structure builds upon the goal of an urban village by emphasizing pedestrian connections, existing open space, and a sense of scale that makes it a good neighbor to both existing and future buildings. Pursuing LEED® Gold Certification. Client: CIM Group

The Lot Plaza Building
West Hollywood, California



This five-story, 110,000 s.f. building is the second phase of The Lot Movie Studios Comprehensive Development Plan.

A sweeping front façade serves as a dynamic icon and is punctuated by the ground floor lobby, providing a strong backdrop for a new central, multi-function courtyard. The rectangular volume is manipulated to create offsets, corner offices, and a series of ledges and terraces that avoid the sterility of typical office environments. In most areas,

high-performance glass windows (many of them operable) span the 13 foot floor-to-floor height, providing expansive views and evoking a loft-like feel. The exposed structural concrete frame plays off the imagery of film strips, and the proposed roof-top deck will create a multi-function space that can be used for special events. Client: CIM Group